

**THE COUNCIL OF THE BOROUGH OF MILTON KEYNES (THE COUNCIL OF  
THE BOROUGH OF MILTON KEYNES (CENTRAL MILTON KEYNES) (ON-  
STREET RESIDENTS' PERMIT PARKING PLACES) ORDER 2005)  
VARIATION ORDER 2008**

The Council of the Borough of Milton Keynes ("the Council") in exercise of its powers under Sections 45, 46, 49 and 53 and Part IV of Schedule 9 of the Road Traffic Regulation Act 1984 ("the Act of 1984") and of all other enabling powers, and after consultation with the chief officer of police in accordance with Part III of Schedule 9 to the Act of 1984, hereby makes the following Order:

**PART 1**

**IMPLEMENTATION, CITATION AND DEFINITIONS**

1. This Order shall come into operation on the 13<sup>th</sup> day of June 2008 and may be cited as "The Council Of The Borough Of Milton Keynes (The Council Of The Borough Of Milton Keynes (Central Milton Keynes) (On-Street Residents' Permit Parking Places) Order 2005) Variation Order 2008".
2. Any reference in this Order to any enactment shall be construed as a reference to that enactment as amended by any subsequent enactment.
3. The plans annexed to this Order identify the lengths of road subject to this Order, provided that where there is any inconsistency between the plans and the Articles it is the wording of the Articles which shall prevail.
4. The plans annexed to this Order are hereby annexed to The Council of the Borough of Milton Keynes (Central Milton Keynes) (On-Street Residents' Permit Parking Places) Order 2005 and form part of the Order.

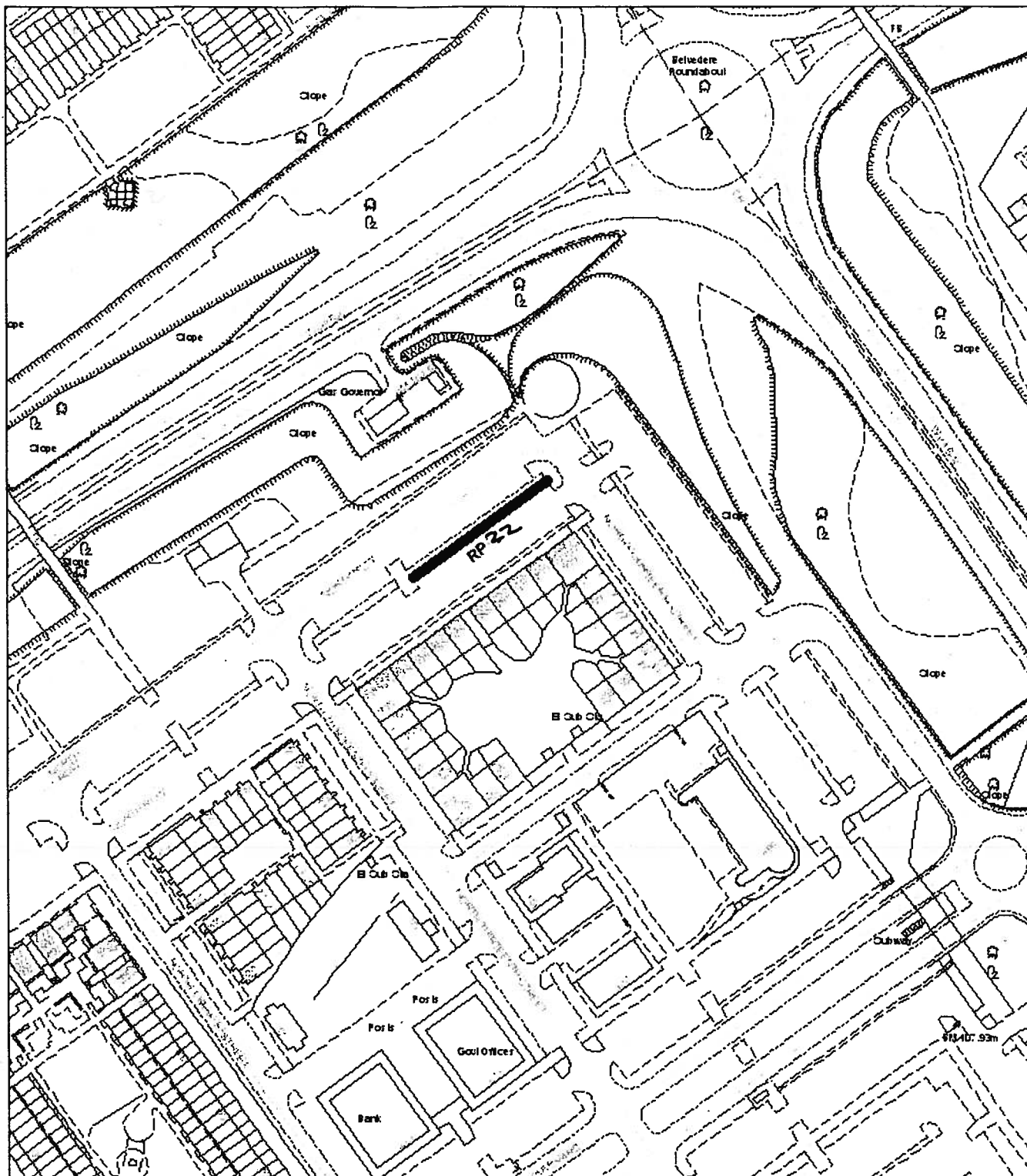
**PART 2**

**VARIATIONS**


5. The Council of the Borough of Milton Keynes (Central Milton Keynes) (On-Street Residents' Permit Parking Places) Order 2005 ("The Principal Order") is varied as provided by the following provisions of this Order:-

The following items are inserted into Schedule 1, Part B of the Principal Order as follows:-

- 1) THE CUL-DE-SAC BETWEEN SOUTH NINTH STREET AND SOUTH TENTH STREET  
RP20 That whole area (except that that is not public highway)
- 2) SOUTH FIFTH STREET  
SOUTH-WEST SIDE  
RP21 From Avebury Boulevard to South Row



# Notes:

 Residents permit parking places

**RP 22** TRO reference number

Map referred to in the Council of the Borough of Milton Keynes  
(The Council of the Borough of Milton Keynes (Central Milton Keynes)  
(On-Street Residents' Permit Parking Places) Order 2005) Variation Order 2008

Not to Scale

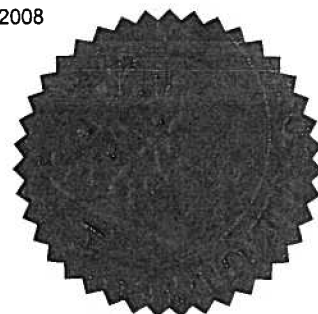
The common seal of the Council of the Borough of Milton Keynes was hereunto affixed in the presence of:

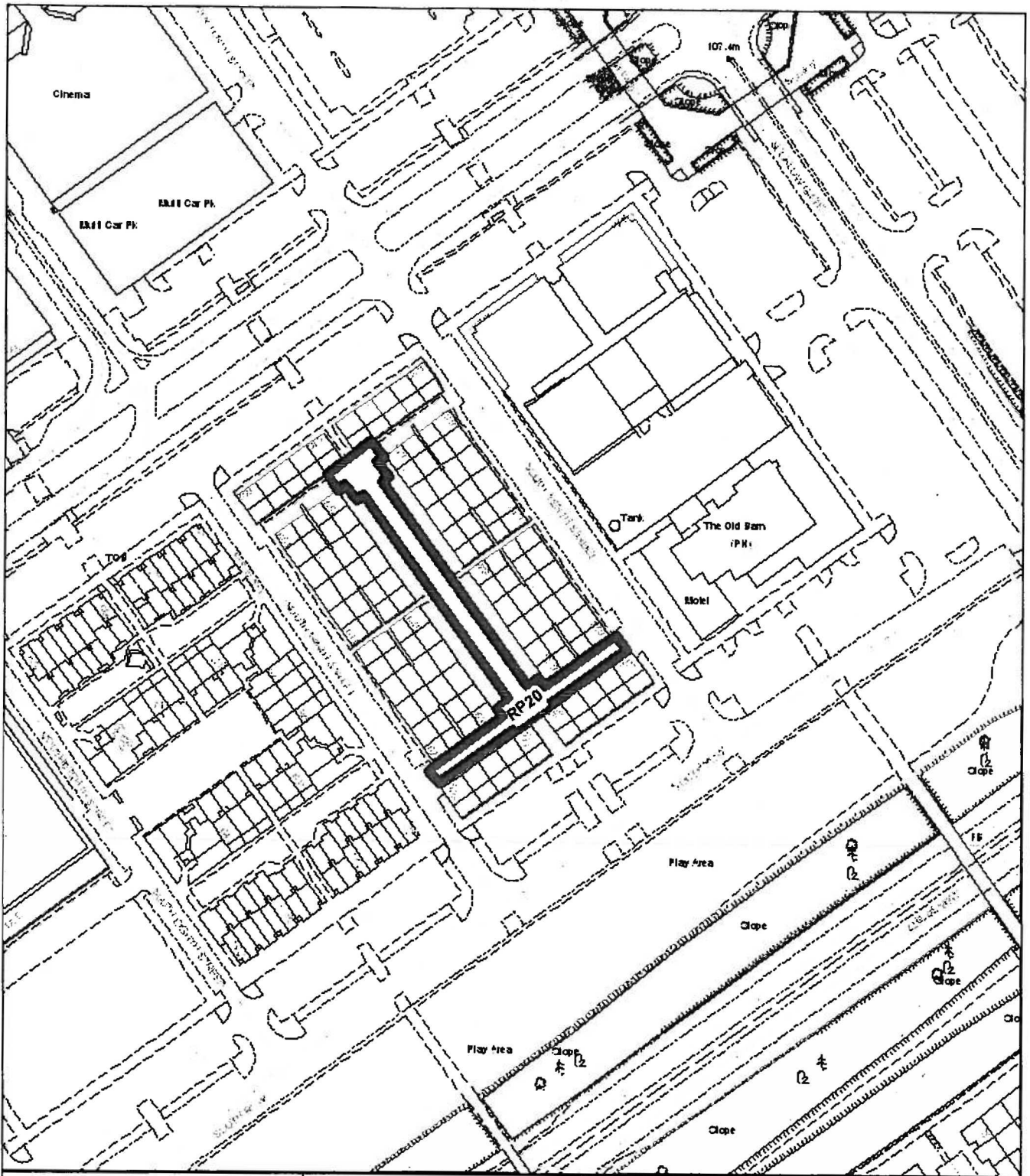


HEAD OF LEGAL SERVICES AND MONITORING OFFICER


Map 1

18/63





**Notes:**

 Residents permit parking places

**RP20** TRO reference number

Map referred to in the Council of the Borough of Milton Keynes  
(The Council of the Borough of Milton Keynes (Central Milton Keynes)  
(On-Street Residents' Permit Parking Places) Order 2005) Variation Order 2008

Not to Scale

The common seal of the Council of the Borough of Milton Keynes was hereunto affixed in the presence of:

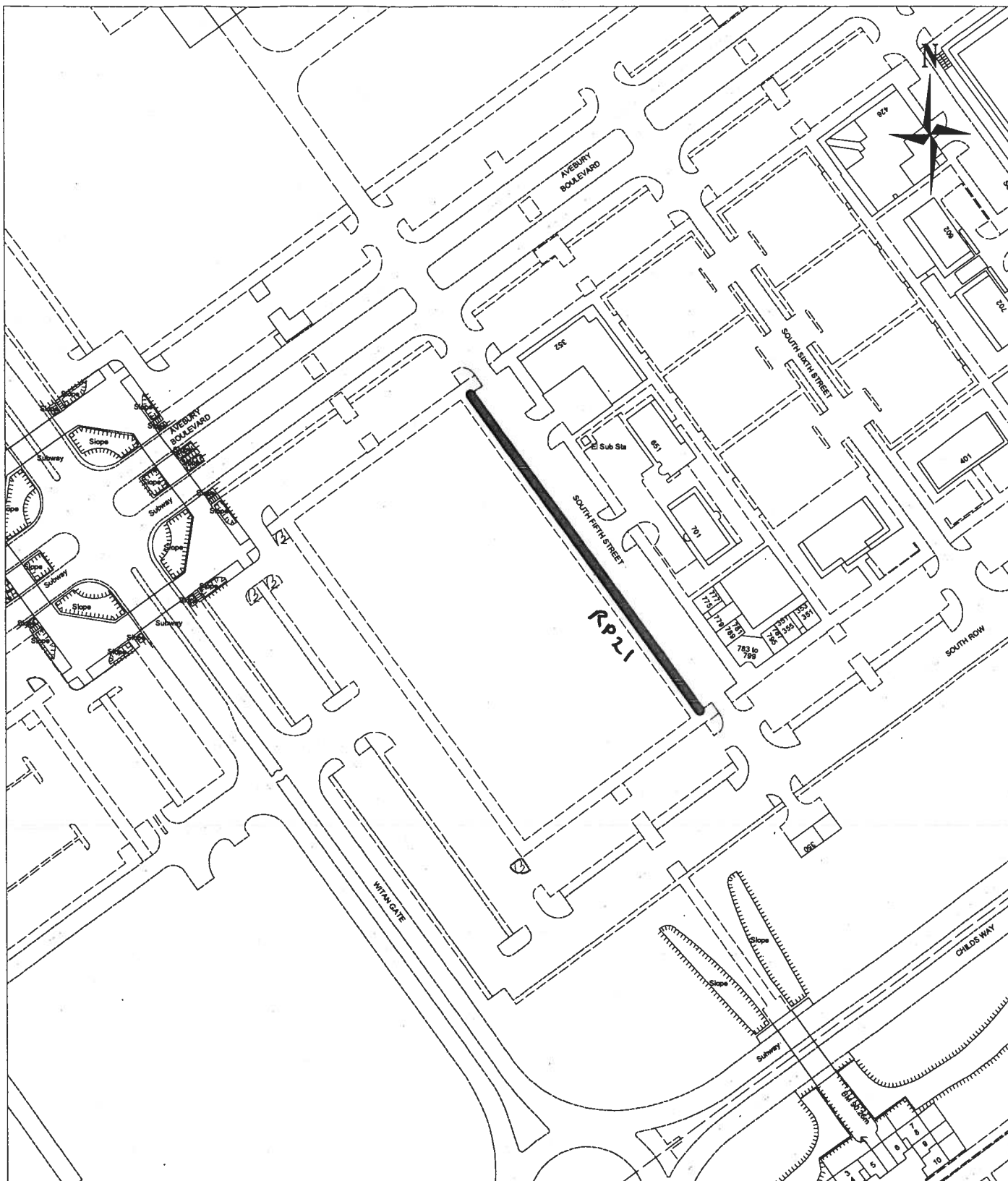


HEAD OF LEGAL SERVICES AND MONITORING OFFICER


Map 2

18/63





# Notes:

-  Residents permit parking places
- RP21** TRO reference number

Map referred to in the Council of the Borough of Milton Keynes  
(The Council of the Borough of Milton Keynes (Central Milton Keynes)  
(On-Street Residents' Permit Parking Places) Order 2005) Variation Order 2008

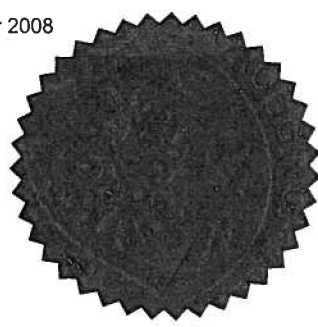
Not to Scale

The common seal of the Council of the Borough of  
Milton Keynes was hereunto affixed in the presence of:



HEAD OF LEGAL SERVICES AND MONITORING OFFICER

18/63




Map 3

- 3) NORTH ROW - THE SOUTH-EAST VEHICULAR ACCESSWAY –  
THE NORTH-WEST SIDE  
RP22 Between the porte cochere north-west of North Fourteenth Street  
and North Fourteenth Street.

THE COMMON SEAL OF the **COUNCIL OF  
THE BOROUGH OF MILTON KEYNES** was  
hereunto affixed this 12<sup>th</sup> day of June 2008  
in the presence of:-

18163



  
.....

HEAD OF LEGAL SERVICES AND MONITORING OFFICER